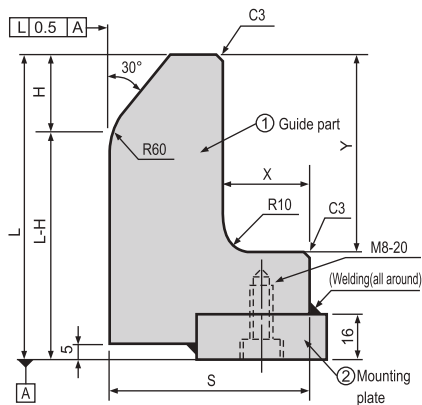


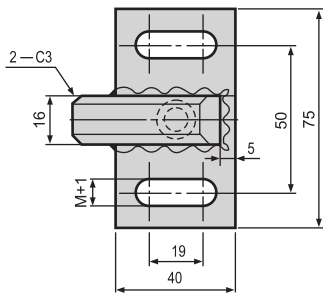
Section H
NEST GUIDES



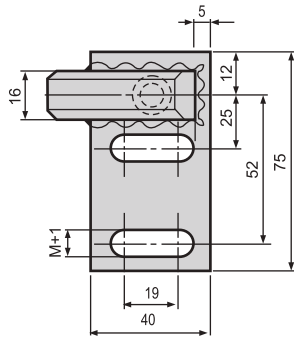
Nest Guides (Upper Part Relief Type)



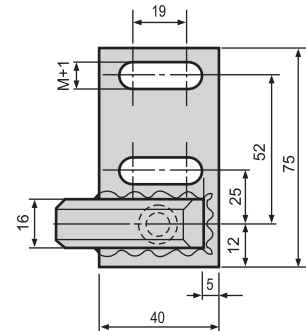
ANGC



ANGR



ANGL



- ① (L-Y) ≧ 40
- ① (S-X) ≧ 30

■ Mounting bolt and other accessories

M	A
M10	Allen Bolt 10 - 35 (2pcs) Spring washer for M10 (2pcs)
M12	Allen Bolt 12 - 35 (2pcs) Spring washer for M12 (2pcs)

■ Material : ① EN-8 ② M.S.

Catalog No.	5mm increments					Mounting bolt hole M
	L	H	S	X	Y	
ANGC	75 ~ 100	20 ~ 40	50 ~ 100	20 ~ 70	35 ~ 60	M10
ANGR	105 ~ 150				65 ~ 110	
ANGL	155 ~ 200				115 ~ 160	

① H is dimension before machining R60.

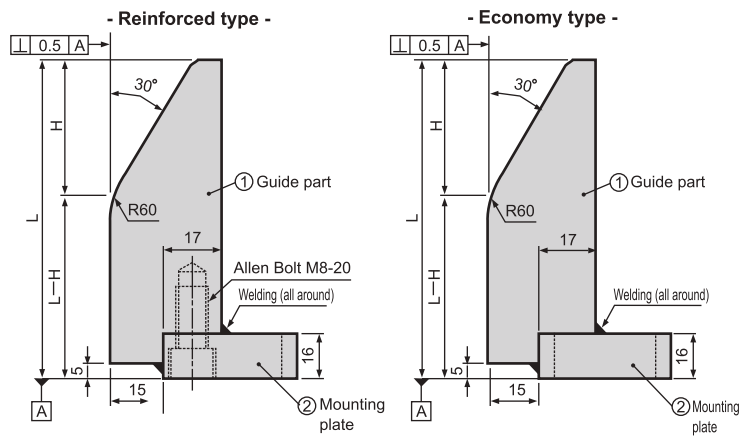
① The guide part① and the mounting plate② are to be fixed by welding and bolting.



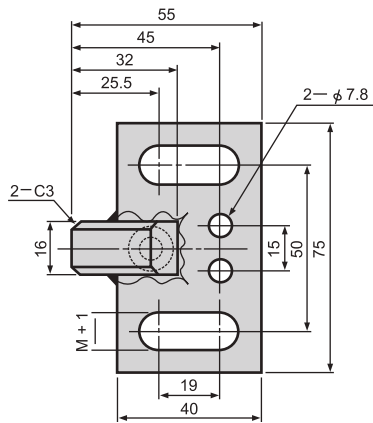
ORDERING
CODE

CATALOG NO.	L	H	S	X	Y	M
ANGC	100	20	S80	X30	Y40	M10

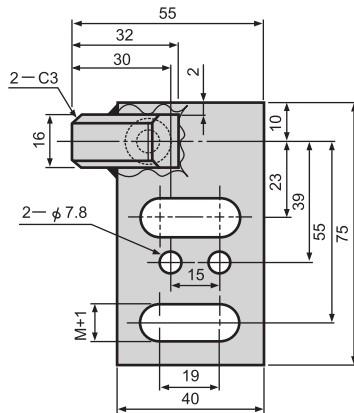
Nest Guides - Reinforced Type/ Economy Type



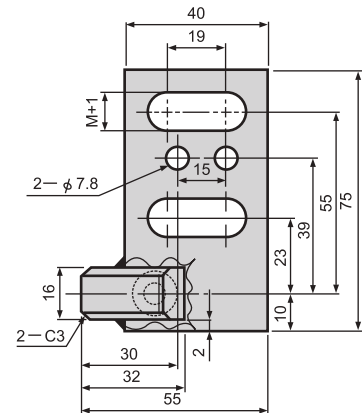
ANGRTC ANGETC



ANGRTR ANGETR



ANGRTL ANGETL



■ Mounting and other accessories

M	Allen Bolt
M10	M10-35 (2pcs.) Spring washer for M10 (2pcs)
M12	M12-35 (2pcs.) Spring washer for M12 (2pcs)

① H is dimension before machining R60

Reinforced Type **M** Material : ① EN-8 ② M.S.

Economy Type **M** Material : ① MS ② M.S.

■ Reinforced type

Catalog No.	L		H	Mounting bolt hole M
	5mm increments	5mm increments		
ANGRTC ANGRTR ANGRTL	65 ~ 100	20 ~ 40	M10 M12	
	105 ~ 150			
	155 ~ 200			
	205 ~ 250			
	255 ~ 300			
305 ~ 350				

① The guide part ① and the mounting plate ② are to be fixed by welding and bolting.

■ Economy type

Catalog No.	L		H	Mounting bolt hole M
	5mm increments	5mm increments		
ANGETC ANGETR ANGETL	65~100	20~40	M10 M12	
	105~150			
	155~200			

① The guide part ① and the mounting plate ② are fixed by welding only.



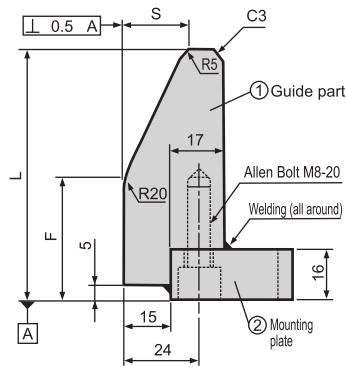
**ORDERING
CODE**

CATALOG NO.	L	H	M
ANGRTC	180	20	M12
ANGETC	180	30	M10

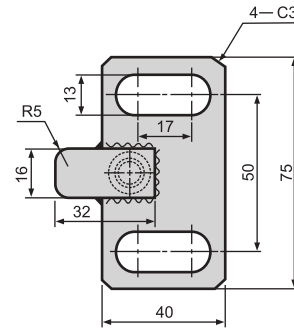
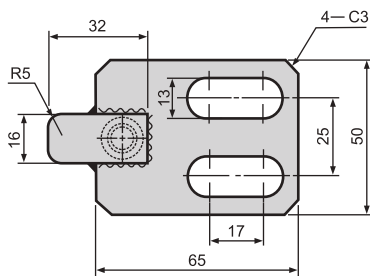
Nest Guides - Round Type Without Pilot Holes For Dowels



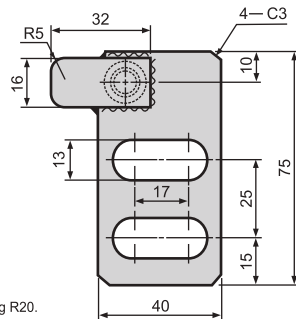
ANGRDT



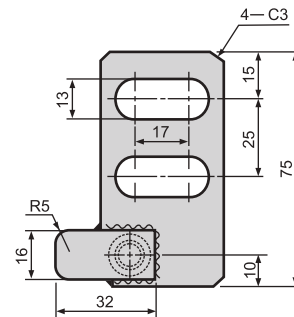
ANGRDTC



ANGRDTR



ANGRDTL



① F is dimension before machining R20.
 ② (L-F) ≥ 10

■ Mounting bolt and other accessories

M	A
M12	Allen Bolt 12 35 (2pcs) Spring washer for M12 (2pcs)

■ Material : ① EN-8
 ② M.S.

Catalog No.	L	F	S
		10mm increments	
ANGRDT ANGRDTC ANGRDTR ANGRDTL	60	20 ~ 150	15
	80	20 ~ 70	
	100	20 ~ 90	
	120	20 ~ 110	20
	140	20 ~ 130	
	160	20 ~ 150	
	180	20 ~ 170	
200	20 ~ 190		

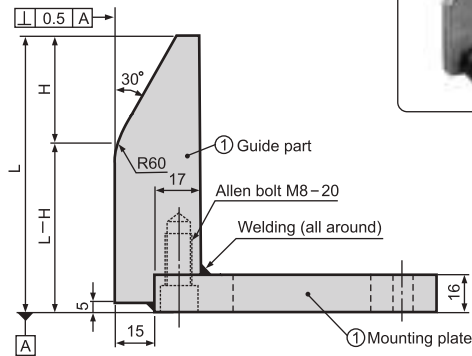


ORDERING CODE	CATALOG NO.	L	F	S
	ANGRDT	190	55	10

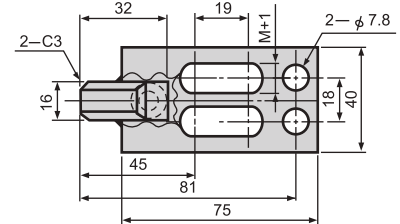
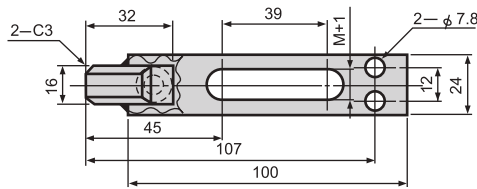
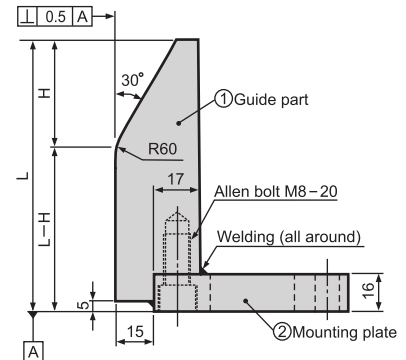
Nest Guides - (with Selective Mounting Plate) Reinforced Type



ANGSMPA



ANGSMPC



■ Mounting bolt and other accessories

M	Allen Bolt
M10	M10-35 (2pcs) Spring washer for M10 (2pcs)
M12	M12-35 (2pcs) Spring washer for M12 (2pcs)

① H is dimension before machining R60

■ Material : ① EN-8
② M.S.

Catalog No.	L	H	Mounting bolt hole M
	5mm increments	5mm increments	
ANGSMPA ANGSMPC	65 ~ 100	20 ~ 40	M10 (M12)
	105 ~ 150		
	155 ~ 200		

① M12 is only applicable to ANGSMPA

② The guide part ① and the mounting plate ② are fixed by welding only.



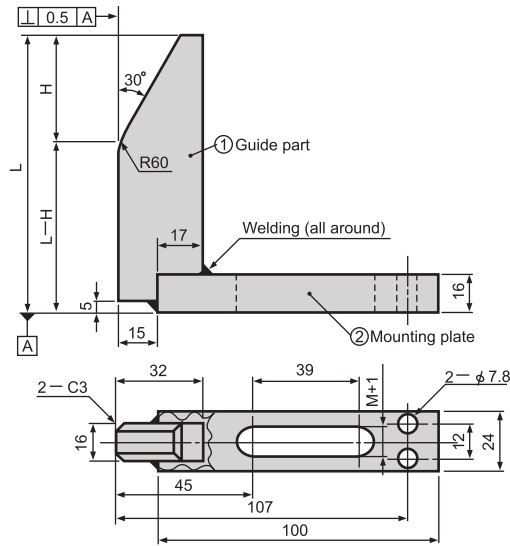
ORDERING
CODE

CATALOG NO.	L	H	M
ANGSMPA	170	30	M10

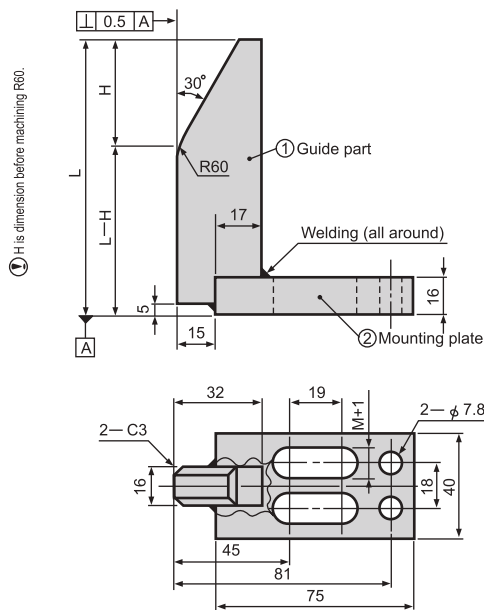
Nest Guides (with Selective Mounting Plate)



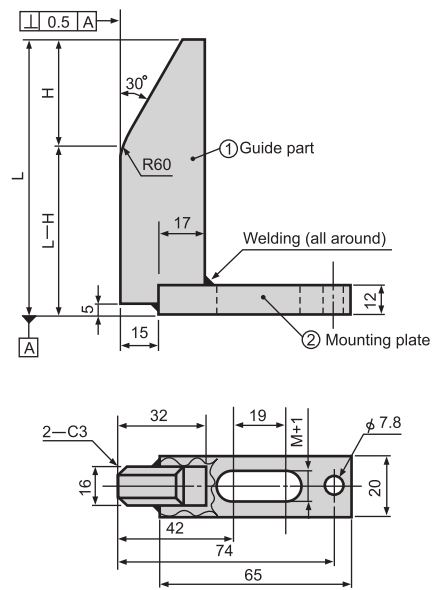
AENSTA



AENSTC



AENSTD



■ **Mounting and other accessories**

M	Accessories
M10	M10 - 35 (2pcs.) Spring washer for M10 (2pcs)
M12	M10 - 35 (2pcs.) Spring washer for M12 (2pcs)

■ Material : ① MS ② M.S.

Catalog No.	L	H	Mounting bolt hole M
	5mm increments	5mm increments	
AENSTA	65~100	20~40	M10 (M12)
AENSTC	105~150		
AENSTD	155~200		

- ① M12 is only applicable to AENSTA.
- ② The guide part ① and the mounting plate ② are fixed by welding only.



ORDERING
CODE

CATALOG NO.	L	H	M
AENSTA	185	40	M10