

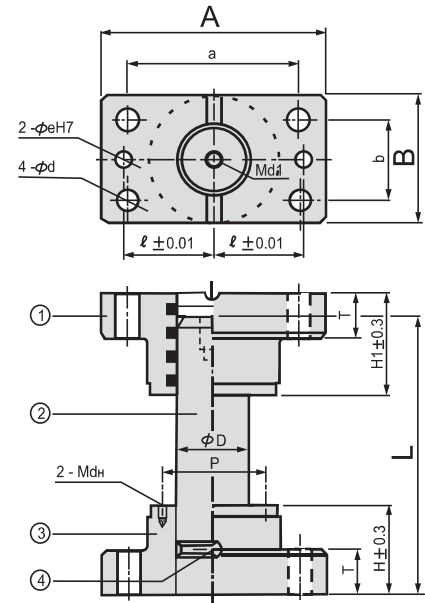
**Section E**  
**GUIDE POST SETS**



# Oilless Guide Post Set



**ASGR**



**Non lubrication type Component**

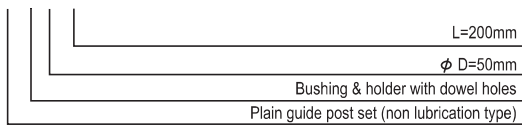
Figure shows ASGR-NT.

**When ordering, specify;**

- Bushing & holder without dowel holes : ASGR-D X L
- Bushing & holder with dowel holes : ASGR-N-D X L
- Holder with tapped hole for height block : ASGR-T-D X L
- With both dowel holes & tapped holes : ASGR-NT-D X L

**Example**

ASGR-N-50X200



**ACCURACY :**

Perpendicularity after assembly : 0.02 / 100 mm between bottom surface of bushing & center of guide pillar.

Parallelism after assembly : 0.02 / 100 mm between bottom surface of bushing & holder.

No.	Description	Q'ty	Material	Remarks	Std. Symbol
1	Post bushing	1	FG-260		ASGRB ASGRB-N
2	Guide Post	1	Case Hardening Steel	HRC 56-60	ANGP
3	Holder	1	FG -260		AGPH AGPH-T AGPH-N AGPH-NT
4	Set Screw	1	SCM 435		

**Dimension**

Standard No.	D	A	B	H	H <sub>1</sub>	T	a	b	φ d	Md <sub>1</sub>	Bolt	ASGR-N		ASGR-T		
												ℓ	φ e	Dowel pin	p	Md <sub>2</sub>
ASGR-25 x L	25	84	48	30	45	20	66	30	9	M8 x 35	33	8	φ 8x30	37	M4	
ASGR-32 x L	32	100	58	40	50		76	36	11		M10 x 40			38		45
ASGR-38 x L	38	130	75	50	60	25	100	44		14	M10 x 45	50	10	φ10x40	60	M5
ASGR-50 x L	50	155	90	65	85		125	60	M12 x 50		62.5	72			M6	
ASGR-60 x L	60	190	120	75	100	30	150	80	18	M12	M16 x 60	75	13	φ13x50	92	M8
ASGR-80 x L	80	230	150	100	130	35	180	110	22		M20 x 75	95	16		φ16x60	

**L size list**

Standard	Post dia. φ D	Post length L																			
		25	80	90	100	110	120	130	140	150	160	170	180	200	220	250	280	300	350	400	450
ASGR	25																				
ASGR-N	32																				
ASGR-T	38																				
ASGR-NT	50																				
	60																				
	80																				



**ORDERING CODE**

CATALOG NO.	D	L
ASGR-N	60	200



# Plain Guide Post Set



ASGO

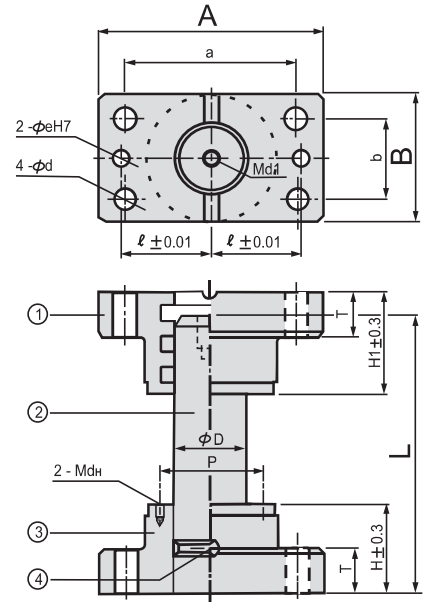


Figure shows ASGO-NT.

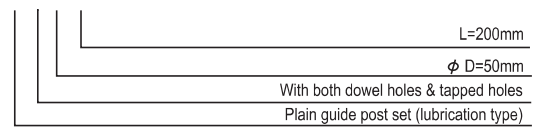
## Component

No.	Description	Q'ty	Material	Remarks	Std. Symbol
1	Post bushing	1	FG-260		ASGB ASGB-N
2	Guide Post	1	Case Hardening Steel	HRC 56-60	ANGP
3	Holder	1	FG -260		AGPH AGPH-T AGPH-N AGPH-NT
4	Set Screw	1	SCM 435		

### When ordering, specify;

Bushing & holder without dowel holes : ASGO-D X L  
 Bushing & holder with dowel holes : ASGO-N-D X L  
 Holder with tapped hole for height block : ASGO-T-D X L  
 With both dowel holes & tapped holes : ASGO-NT-D X L

Example  
ASGO-NT-50X200



### ACCURACY :

Perpendicularity after assembly : 0.02 / 100 mm between bottom surface of bushing & center of guide pillar.  
 Parallelism after assembly : 0.02 / 100 mm between bottom surface of bushing & holder.

## Dimension

Standard No.	φ D	A	B	H	H <sub>1</sub>	T	a	b	φ d	Md <sub>1</sub>	Bolt	l	ASGO-N		ASGO-T	
													φ e	Dowel pin	p	Md <sub>2</sub>
ASGO-25 x L	25	84	48	30	45	20	66	30	9	M8 x 35	33	8	φ 8x30	37	M4	
ASGO-32 x L	32	100	58	40	50		76	36			45					
ASGO-38 x L	38	130	75	50	60	25	100	44	11	M10 x 45	50	10	φ 10x40	60	M5	
ASGO-50 x L	50	155	90	65	85		125	60			72			M6		
ASGO-60 x L	60	190	120	75	100	30	150	80	18	M12	M16 x 60	75	13	φ 13x50	92	M8
ASGO-80 x L	80	230	150	100	130	35	180	110	22	M20 x 75	95	16	φ 16x60	116		

## L size list

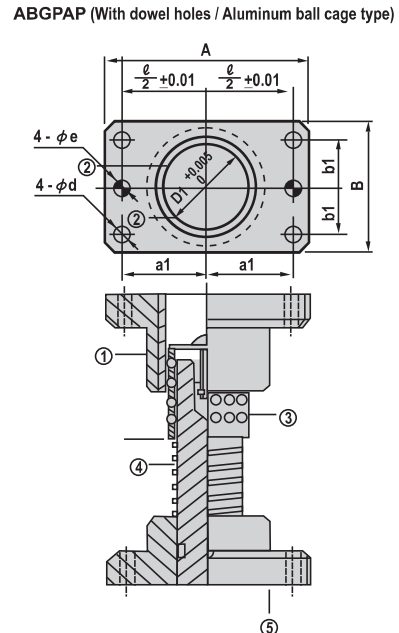
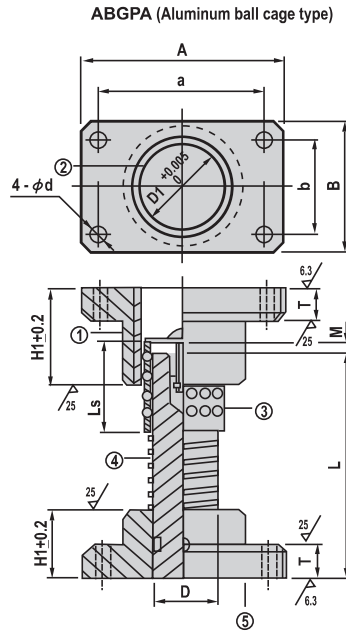
Standard	Post dia. φ D	Post length L																			
		25	80	90	100	110	120	130	140	150	160	170	180	200	220	250	280	300	350	400	450
ASGO	25																				
ASGO-N	32																				
ASGO-T	38																				
ASGO-NT	50																				
	60																				
	80																				



ORDERING CODE	CATALOG NO.	D	L
	ASGO-N	60	200



# Ball Bearing Guide Post Sets - Movable Stopper



- ① ⑤ FG260
- ② EN - 31 (58 Rc)
- ③ Aluminium Ball Cage
- ④ EN-31 (58 Rc)

D	D1	A	B	a	b	d	H	H1	T	LS	M	ℓ	a1	b1	eH7	⑤ Attached bolts	⑦ Attached dowel pin
20	26	74	44	56	30	6.6	30	50	15	50	0 ~ 20	56	28	15	+0.012 0	M6 - 30	AITHDP 6 - 20
25	31	84	48	66	30	9	30	45	20	45	0 ~ 20	66	33	15	+0.015 0	M8 - 35	AITHDP 8 - 30
32	40	100	58	76	36	11	40	50	20	50	0 ~ 25	76	38	18		M10 - 40	AITHDP 8 - 30
38	48	130	75	100	44	11	50	60	25	60	0 ~ 29	100	50	22		M10 - 45	AITHDP 10 - 40
50	60	155	90	125	60	14	65	85	25	85	0 ~ 42	125	62.5	30		M12 - 50	AITHDP 10 - 40

Catalog No.		L				
Type	D					
ABGPA ABGPAP	20	90	100	110	120	
		130	140	150	160	
	25	90	100	110	120	
		130	140	150	160	
		170	180	200		
	32	110	120	130	140	150
		160	170	180	200	
		220	240	260		
	38	130	140	150	160	
		170	180	200	220	
		240	260	300		
	50	170	180	200		
220		240	260			
300		350				



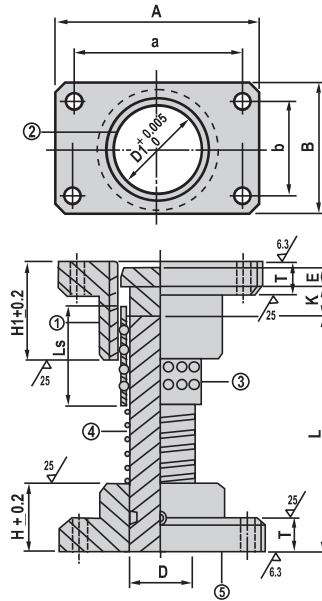
**ORDERING CODE**    **CATALOG NO.**    **L**  
 ABGPAP 38    180



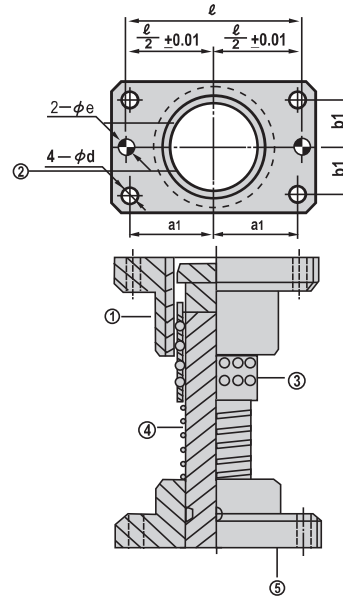
# Ball Bearing Guide Post Sets - Fixed Stopper



**ABGPAK**  
(Aluminum ball cage type)



**ABGPAKP**  
(With dowel holes / Aluminum ball cage type)



- ① ⑤ FG260
- ② EN - 31 (58 Rc)
- ③ Aluminium Ball Cage
- ④ EN-31 (58 Rc)

D	D1	A	B	a	b	d	H	H1	T	K	E	Ls	ℓ	a1	b1	eH1	⑥ Attached bolts	⑦ Attached dowel Pin
25	31	84	48	66	30	9	30	45	20	20	5	45	66	33	15	8	M8 - 35	AITHDP 8 - 30
32	40	100	58	76	36	11	40	50	20	25	5	50	76	38	18	8		
38	48	130	75	100	44	11	50	60	25	30	10	60	100	50	22	10	M10 - 45	AITHDP 10 - 40
50	60	155	90	125	60	14	65	85	25	40	10	85	125	62.5	30	10		
60	70	190	120	150	80	18	75	100	30	50	15	100	150	75	45	13	M16 - 60	AITHDP 13 - 50

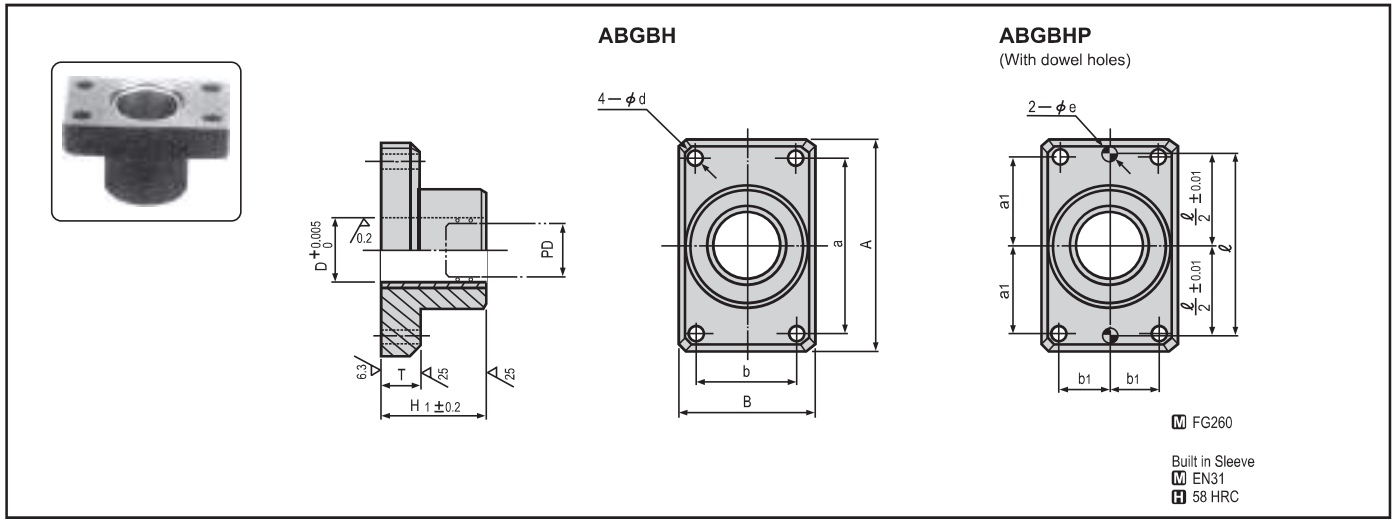
Catalog No. Type	D	L									
		ABGPAK ABGPAKP	25	90	100	110	120				
130	140			150	160						
170	180			200							
32	110		120	130	140	150					
	160		170	180	200						
	220		240	260							
38	130		140	150	160						
	170		180	200	220						
	240		260	300							
50	170		180	200							
	220		240	260							
	300		350								
60	200	220									
	240	260									
	300	350									



ORDERING CODE    CATLOG NO.    L  
ABGPAK 50    200



# Ball Cage Guide Bushing



Catalog No.		D	A	B	a	b	d	H <sub>1</sub>	T	eH7	l	a1	b1					
Type	PD																	
ABGBH ABGBHP	20	26	+0.005 0	74	44	56	30	6.6	50	15	+0.012 0	56	28	15				
	25	31		84	48	66	30	9	45	20		+0.015 0	66	33	15			
	32	40		100	58	76	36	11	50	20			+0.018 0	76	38	18		
	38	48		130	75	100	44	11	60	25				+0.018 0	100	50	22	
	50	60		155	90	125	60	14	85	25					+0.018 0	125	62.5	30
	60	70		190	120	150	80	18	100	30						+0.018 0	150	75

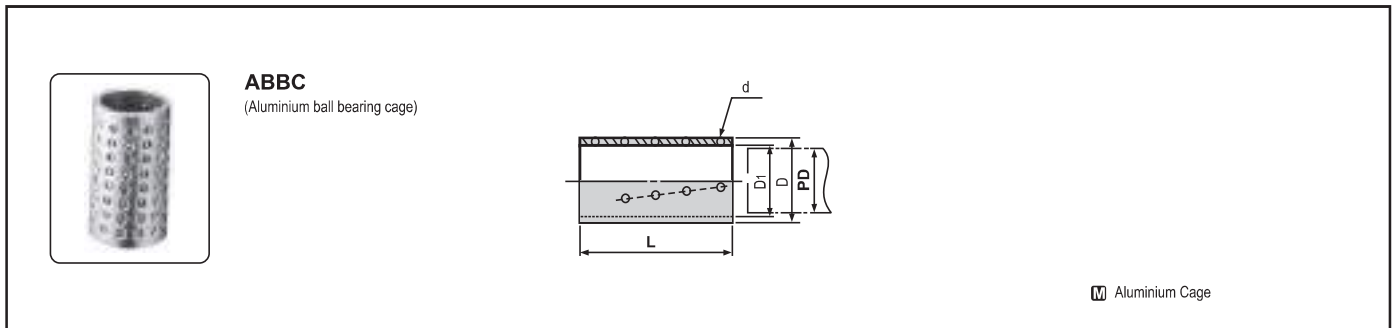


ORDERING CODE

CATALOG NO.

ABGBH 32

# Ball Bearing Cage



Applicable Post dia.	OD φD	ID φD <sub>1</sub>	Ball dia. φd	Number of balls	Rate	Catalog No.		
						Type	PD	L
20	25.5	20.5	3	96	1.72	ABBC	20	50
25	30.5	25.5		125	1.79		25	45
32	39.5	32.5	4	144	1.65		32	50
38	47.5	38.5		128	1.64		38	60
50	59.5	50.5	5	220	1.64		50	85
60	69.5	60.5		264	1.74		60	100



ORDERING CODE

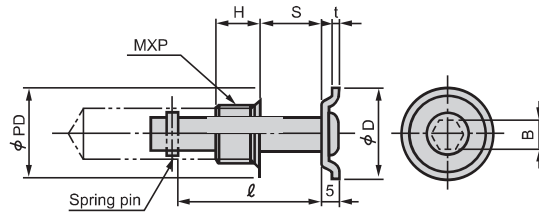
CATALOG NO. L

ABBC 20 50

# Stoppers



**ASBGP**  
(Stopper)



ABBC Ball cage length	ASBGP	
	s	φ
50	0-20	32
60	0-25	40
70	0-29	44
90	0-42	57

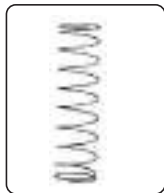
**M** Material : MS

Catalog No.		D	M×P	H	B	t
Type	PD - L					
ASBGP	20 - 50	24	14×1.5	12	7	1.6
	25 - 50	29	16×1.5		8	
	32 - 60	37	20×1.5	15	10	
	38 - 70	44				
	50 - 90	56				

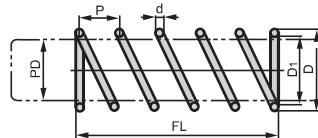


**ORDERING CODE**    **CATALOG NO.**  
ASBGP 38-70

# Spring for Ball Bearing Guide Post Sets



**ASBGP**  
(Spring)



PD Post.dia.	D	D1	d	P
20	22.5	20.5	+1.0	1.0
25	27.9	25.5	0	1.2
32	35.7	32.5	+1.5	1.6
38	42.5	38.5	0	2.0
50	55.7	50.5	+2.0	2.6
60	66.9	60.5	0	3.2

**M** Material : Spring Steel

Guide post sets		Catalog No.		FL
D	L	Type	PD	
20	90	ASBGP	20	40
	100			50
	110			70
	120			80
	130			100
	140			110
	150			120
160	140			
25	90		25	40
	100			50
	110			70
	120			80
	130			100
	140			110
	150	120		
	160	140		
	170	150		
	180	160		
200	180			

Guide post sets		Catalog No.		FL
D	L	Type	PD	
32	110	ASBGP	32	50
	120			60
	130			70
	140			90
	150			110
	160			120
	170			130
	180			140
	200			170
	220			190
	240			210
	260			230
	38			130
140		70		
150		80		
160		90		
170		110		
180		120		
200		150		
220		170		
240		190		
260		210		
300	230			

Guide post sets		Catalog No.		FL
D	L	Type	PD	
50	170	ASBGP	50	70
	180			90
	200			110
	220			140
	240			170
	260			190
	300			230
350	280			
60	200		60	90
	220			130
	240			150
	260			180
	300			230
	350			250



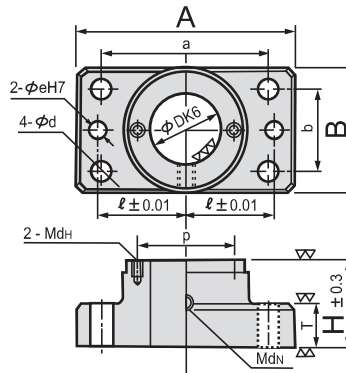
**ORDERING CODE**    **CATALOG NO.**  
ASBGP 38-150

# Guide Post Holder



AGPH-NT

Material : FG260



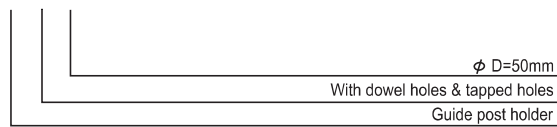
AGPH : With 4 mounting bolts  
 AGPH-N : With 4 mounting bolts and 2 female dowel pins

**When ordering, specify;**

- Without dowel holes : AGPH-D
- With dowel holes : AGPH-N-D
- With tapped holes : AGPH-T-D
- With dowel holes & tapped holes : AGPH-NT-D

**Example**

AGPH-NT-50



Standard No.	φ DK6	A	B	H	T	a	b	φ d	Md <sub>h</sub>	Bolt	ℓ	AGPH-N		AGPH-T	
												φ e	Dowel pin	p	Md <sub>h</sub>
AGPH-25	25 <sup>+0.002</sup> <sub>-0.011</sub>	84	48	30	20	66	30	9	M8	M 8 x 35	33	8	φ 8x30	37	M4
AGPH-32	32	100	58	40		76	36	11		M10 x 40	38			45	
AGPH-38	38 <sup>+0.003</sup> <sub>-0.013</sub>	130	75	50	100	44	14	M10 x 45		50	60	10	φ10x40	60	M5
AGPH-50	50	155	90	65	125	60	14	M12 x 50	62.5	72	M6				
AGPH-60	60	190	120	75	30	150	80	18	M12	M16 x 60	75	13	φ13x50	92	M8
AGPH-80	80 <sup>+0.004</sup> <sub>-0.015</sub>	230	150	100	35	180	110	22		M20 x 75	95			16	



ORDERING CODE	CATALOG NO.	D
	AGPH	60






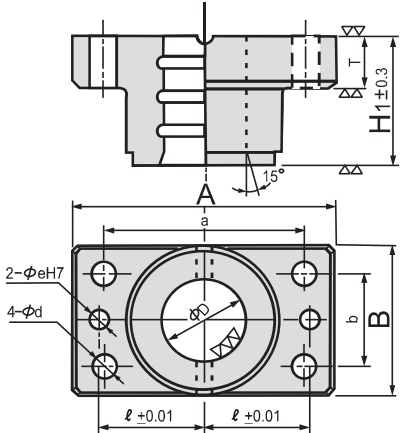
# Plain Post Bushing, Oilless Post Bushing

Plain post bushing (Requires lubrication)

Oilless post bushing

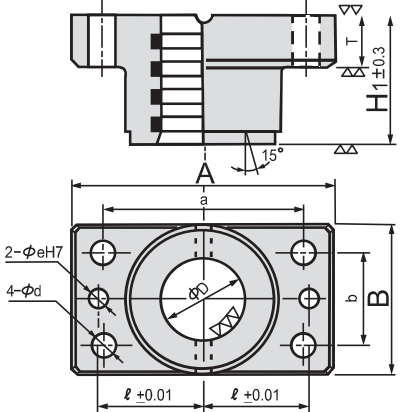


**ASGB-N** Material : FG260



ASGB : With 4 mounting bolts  
ASGB-N : With 4 mounting bolts and 2 female dowel pins

**ASGRB-N** Material : FG260 + Graphite



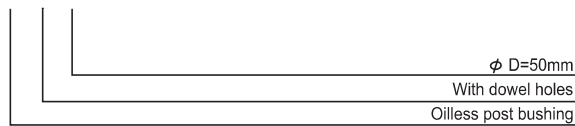
ASGRB : With 4 mounting bolts  
ASGRB-N : With 4 mounting bolts and 2 female dowel pins

**When ordering, specify;**

- Without dowel holes : ASGB-D  
ASGRB-D
- With dowel holes : ASGB-N-D  
ASGRB-N-D

**Example**

ASGRB-N-50



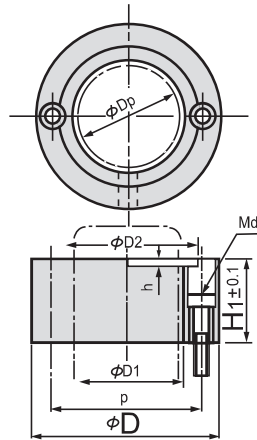
		ASGB-N ASGRB-N										
Standard No.	$\phi D$ Tolerance	A	B	H <sub>1</sub>	T	a	b	$\phi d$	Bolt	$\ell$	$\phi e$	Dowel pin
ASGB(ASGRB)-25	25 <sup>+0.041</sup> / <sub>+0.031</sub>	84	48	45	20	66	30	9	M 8 x 35	33	8	$\phi$ 8x30
ASGB(ASGRB)-32	32 <sup>+0.047</sup> / <sub>+0.037</sub>	100	58	50		76	36	11	M10 x 40	38		
ASGB(ASGRB)-38	38 <sup>+0.049</sup> / <sub>+0.037</sub>	130	75	60	25	100	44	11	M10 x 45	50	10	$\phi$ 10x40
ASGB(ASGRB)-50	50 <sup>+0.052</sup> / <sub>+0.037</sub>	155	90	85		125	60	14	M12 x 50	62.5		
ASGB(ASGRB)-60	60 <sup>+0.061</sup> / <sub>+0.043</sub>	190	120	100	30	150	80	18	M16 x 60	75	13	$\phi$ 13x50
ASGB(ASGRB)-80	80 <sup>+0.063</sup> / <sub>+0.043</sub>	230	150	130	35	180	110	22	M20 x 75	95	16	$\phi$ 16x60

# Height Block



**AHB**

**Material : M.S.**



( With 2 mounting bolts )

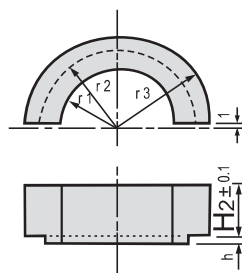
Standard No.	$\phi D_p$	$\phi D$	$\phi D_1$	$\phi D_2$	$h$	$p$	$M_d$	$H_1$ In 5mm each	Safety color	
AHB-25 x $H_1$	25	46	31.5	36	2	37	M4	10 ~ 50	Red or Yellow R / Y	
AHB-32 x $H_1$	32	56	41	45						
AHB-38 x $H_1$	38	72	49	56	3	60	M5	15 ~ 50		
AHB-50 x $H_1$	50	86	62	68		72				M6
AHB-60 x $H_1$	60	112	76	84		92				
AHB-80 x $H_1$	80	140	100	108	116					

# Stock block



**ASB**

**Material : M.S.**



Standard No.	$\phi D_p$	$r_1$	$r_2$	$r_3$	$h$	$H_2$ In 5mm each	Safety color
ASB-25 x $H_2$	25	16	18	23	2	10 ~ 40	Red or Yellow R / Y
ASB-32 x $H_2$	32	20.5	22.5	28			
ASB-38 x $H_2$	38	25	28	36	3	10 ~ 50	
ASB-50 x $H_2$	50	31	34	43			
ASB-60 x $H_2$	60	38	42	56			
ASB-80 x $H_2$	80	50	54	70			

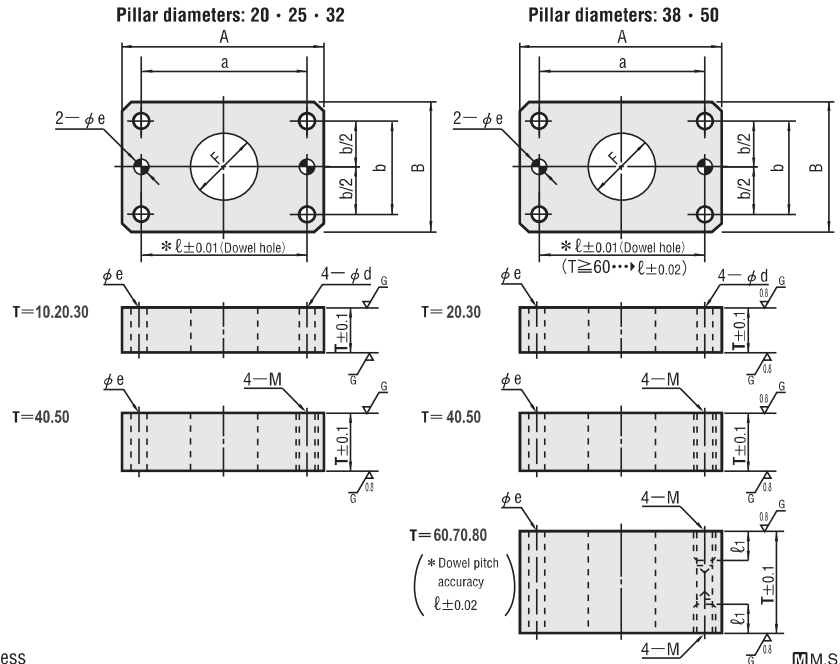
# Spacers For Guide Pillar Sets - Steel Type

## Spacers for guide bushings



AMGSPS (With dowel holes)

T	ℓ <sub>1</sub> (effective tap length)	
	Pillar diameter	
	38	50
60	20	24
70		
80		



Flatness of plate thickness: 0.02/100mm or less

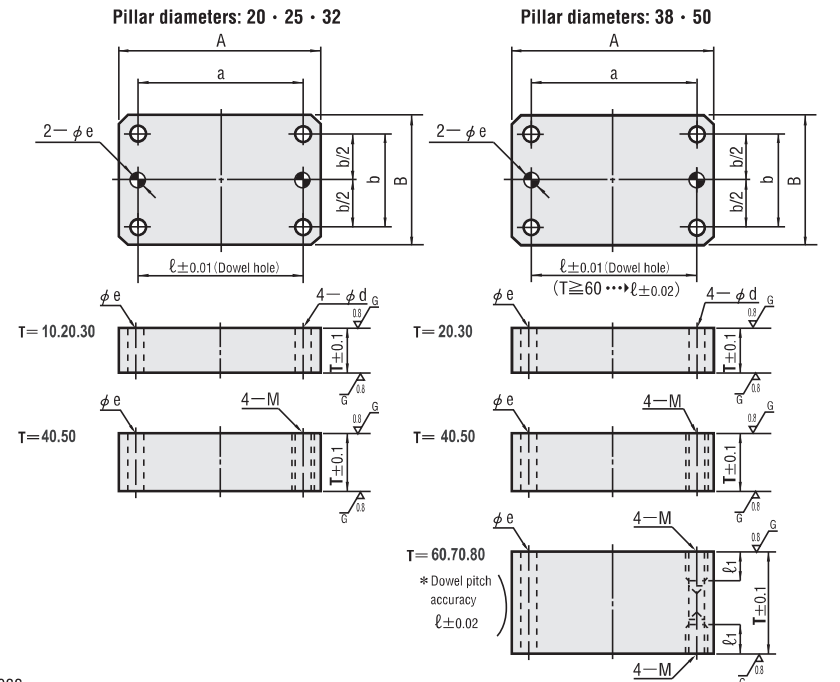
M.S.

## Spacers for guide holders



AMGLPS (With dowel holes)

T	ℓ <sub>1</sub> (effective tap length)	
	Pillar diameter	
	38	50
60	20	24
70		
80		



Flatness of plate thickness: 0.02/100mm or less

M.S.

Pillar diameter	A	B	a	b	d	M	F	*For ℓ ± 0.01 *T60,70,80 ℓ ± 0.02	8H7	Catalog No.		T	
										Type	Pillar Diameter		
20	74	44	56	30	6.6	6	28	56	6	+0.012 0	AMGSPS For bushing	10 20 30 40	
25	84	48	66	30	9	8	34	66	8	+0.015 0		25	10 20 30 40 50
32	100	58	76	36	11	10	42	76	8			32	10 20 30 40 50
38	130	75	100	44	11	10	52	100	10	+0.015 0	AMGLPS For holders	20 30 40 50 60 70 80	
50	155	90	125	60	14	12	62	125	10			50	20 30 40 50 60 70 80



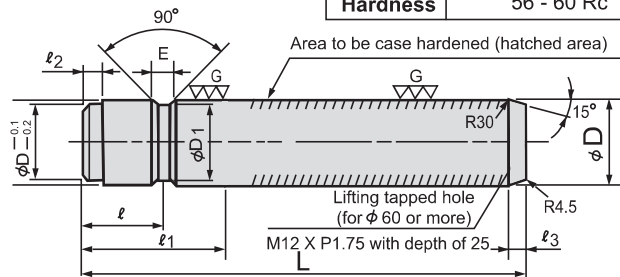
ORDERING CODE

CATALOG NO. T  
AMGSPS20 30

# Guide Post (For Plain & Oilless Bushing)



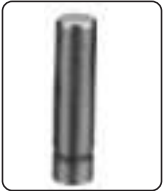
ANGP



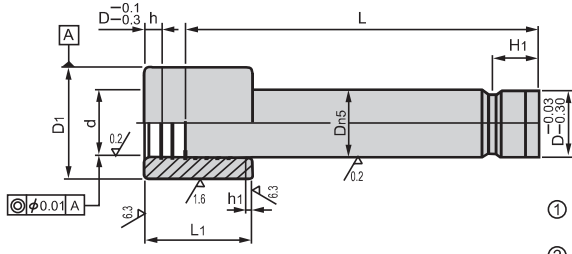
Material	Case hardening Steel
Hardness	56 - 60 Rc

Standard No.	$\phi D$	Tolerance	L	$\phi D_1$	$l$	$l_1$	$l_2$	$l_3$	E								
ANGP-25 X 80	25	+0.024 +0.015	80	22	15	35	4	5	8								
ANGP-25 X 90			90														
ANGP-25 X 100			100														
ANGP-25 X 110			110														
ANGP-25 X 120			120														
ANGP-25 X 130			130														
ANGP-25 X 140			140														
ANGP-25 X 150			150														
ANGP-25 X 160			160														
ANGP-25 X 170			170														
ANGP-25 X 180			180														
ANGP-25 X 200			200														
ANGP-32 X 100			32							+0.028 +0.017	100	29	20	45	4	5	8
ANGP-32 X 110	110																
ANGP-32 X 120	120																
ANGP-32 X 130	130																
ANGP-32 X 140	140																
ANGP-32 X 150	150																
ANGP-32 X 160	160																
ANGP-32 X 170	170																
ANGP-32 X 180	180																
ANGP-32 X 200	200																
ANGP-32 X 220	220																
ANGP-32 X 250	250																
ANGP-38 X 120	38	+0.028 +0.017		120	35	25	55	5	5		8						
ANGP-38 X 130			130														
ANGP-38 X 140			140														
ANGP-38 X 150			150														
ANGP-38 X 160			160														
ANGP-38 X 170			170														
ANGP-38 X 180			180														
ANGP-38 X 200			200														
ANGP-38 X 220			220														
ANGP-38 X 250			250														
ANGP-38 X 280			280														
ANGP-38 X 300			300														
ANGP-50 X 160			50	+0.028 +0.017						160		46	32.5	70	5	10	12
ANGP-50 X 170	170																
ANGP-50 X 180	180																
ANGP-50 X 200	200																
ANGP-50 X 220	220																
ANGP-50 X 250	250																
ANGP-50 X 280	280																
ANGP-50 X 300	300																
ANGP-50 X 350	350																
ANGP-60 X 180	60	+0.033 +0.020			180	56	37.5	80	6	10	12						
ANGP-60 X 200					200												
ANGP-60 X 220					220												
ANGP-60 X 250					250												
ANGP-60 X 280			280														
ANGP-60 X 300			300														
ANGP-60 X 350			350														
ANGP-60 X 400			400														
ANGP-80 X 250			80	+0.033 +0.020	250							76	50	105	8	10	12
ANGP-80 X 280					280												
ANGP-80 X 300					300												
ANGP-80 X 350					350												
ANGP-80 X 400					400												
ANGP-80 X 450	450																

# Oil-free Guide Post Sets - Press Fit Type



**AGPSZE**  
**AGPSZ**



① **M** Material : FG260  
Graphite (embedded)

② **M** Material : Case Hardening Steel  
**H** Hardness : 55 - 60 HRC


Dn5	H1	d	D1JS5		h	h1	L1
			AGPSZE	AGPSZ			
32	20	32	+0.047 +0.037	52	8	4	48
38	+0.028 +0.017	25	+0.049 +0.037	60	10	5	55
50		32.5	+0.052 +0.037	70	15	10	75
60	+0.033 +0.020	37.5	+0.061 +0.043	80	20		90
80		50	+0.063 +0.043	100	25		120

D1	Catalog No.		L																	
	Type	D	90	100	110	120	130	140	150	160	170	180	200	220	250	280	300	350	400	450
52	AGPSZE	32							150	160	170	180	200	220	250					
60		38			110	120	130	140	150	160	170	180								
70		50											200	220	250	280	300			
80		60											180	200	220	250	280	300	350	400
100		80													250	280	300	350	400	450
75	AGPSZ	50								160	170	180	200	220	250	280	300	350		
85		60										180	200	220	250	280	300	350	400	
110		80													250	280	300	350	400	450

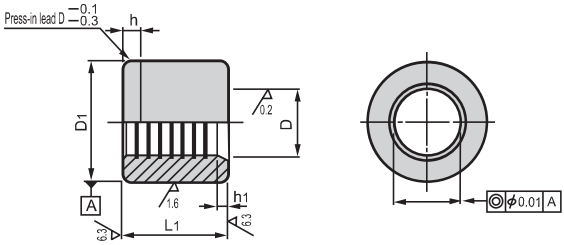


ORDERING CODE	CATALOG NO.	L
	AGPSZE 60	200

# Oil-free Guide Bushings - Press Fit Type



**ACIGBZE**  
**ACIGBZ**



Mat : FG260  
Graphite (embedded)

Catalog No.		D1JS5					h	h1	L1
Type	D	ACIGBZE		ACIGBZ					
ACIGBZE ACIGBZ	32	+0.047 +0.037	52	—	—	8	4	48	
	38	+0.049 +0.037	60	± 0.0065	—	10	5	55	
	50	+0.052 +0.037	70		75	± 0.0065	15	75	
	60	+0.061 +0.043	80		85	± 0.0075	20	90	
	80	+0.063 +0.043	100	± 0.0075	110		25	120	

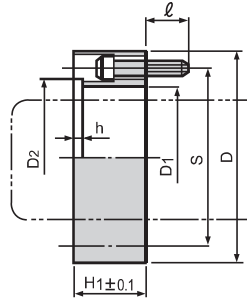
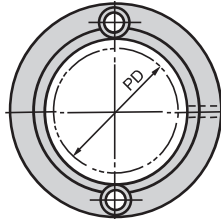


ORDERING CODE	CATALOG NO.
	ACIGBZ 50

# Stroke End Blocks



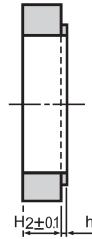
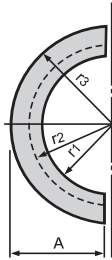
**ASEB**  
(End block)



**M** Material : MS  
Allen Bolt (2 Nos.)



**ASSB**  
(Stock block)



**M** Material : MS

PD	D	D <sub>1</sub>	D <sub>2</sub>	S	h	r <sub>1</sub>	r <sub>2</sub>	r <sub>3</sub>	A	Allen bolt size ③	ℓ
25	46	31.5	36	37	2	15.75	18	23	22	M4 X P0.7	10
32	56	41	45	45	2	20.5	22.5	28	27	M4 X P0.7	10
38	72	49	56	60	3	24.5	28	36	35	M5 X P0.8	10
50	86	62	68	72	3	31	34	43	42	M6 X P1.0	10
60	112	76	84	92	3	38	42	56	55	M8 X P1.25	12
80	140	100	108	116	3	50	54	70	69	M8 X P1.25	12

## ■ End block

Catalog No.		H <sub>1</sub>	Color
Type	PD	5mm increments	
ASEB	25	10~50	R (Red)
	32	10~50 55~60	
	38	15~30 55~70	
	50	20~50 55~80	Y (Yellow)
	60	20~50 55~80	
	80	20~50	
		55~80	

## ■ Stock block

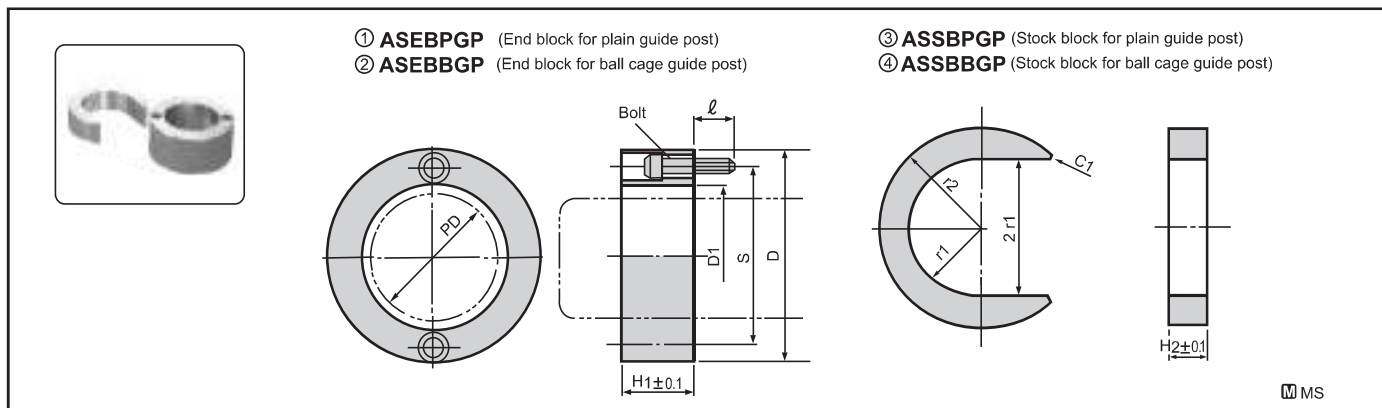
Catalog No.		H <sub>2</sub>	Color
Type	PD	5mm increments	
ASSB	25	10~20	R (Red)
		25~40	
	32	10~20	
		25~40	
	38	10~20	Y (Yellow)
		25~50	
	50	10~20	
		25~50	
60	10~20		
	25~50		
80	10~20		
	25~50		



**ORDERING CODE**

CATALOG NO.	H <sub>1</sub>	R - Y
ASEB 38	30	Y

# Stroke End Block (Flat Type)



PD	D	①ASEBPGP D <sub>1</sub>	②ASEBBGP D <sub>1</sub>	③ASSBPGP r <sub>1</sub>	④ASSBBGP r <sub>1</sub>	S	r <sub>2</sub>	Bolt	l
25	45	29	31.5	14.5	15.75	37	23	M4 X P0.7	10
32	56	37	41	18.5	20.5	45	28	M4 X P0.7	10
38	72	43	49	21.5	24.5	60	36	M5 X P0.8	10
50	86	56	62	28	31	72	43	M6 X P1.0	10
60	112	66	76	33	38	92	56	M8 X P1.25	12
80	140	88	100	44	50	116	70	M8 X P1.25	12

## ■ End block

Catalog No.		H <sub>1</sub>	Color	
Type	PD	5mm increments		
①ASEBPGP	25	10~30	R (Red)	
		35~50		
②ASEBBGP	32	10~30		
		35~50		
②ASEBBGP	38	15~30		Y (Yellow)
		35~50		
②ASEBBGP	50	20~30		
		35~50		
②ASEBBGP	60	20~30		
		35~50		
②ASEBBGP	80	20~30		
		35~50		

## ■ Stock block

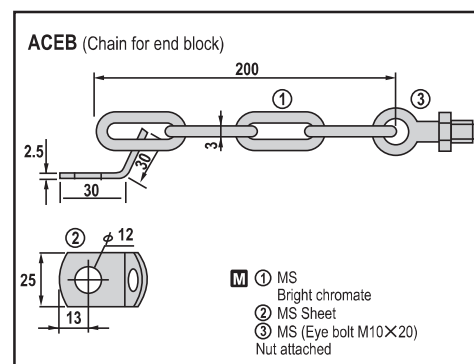
Catalog No.		H <sub>1</sub>	Color	
Type	PD	5mm increments		
③ASSBPGP	25	10~20	R (Red)	
		25~40		
③ASSBPGP	32	10~20		
		25~40		
④ASSBBGP	38	10~20		Y (Yellow)
		25~50		
④ASSBBGP	50	10~20		
		25~50		
④ASSBBGP	60	10~20		
		25~50		
④ASSBBGP	80	10~20		
		25~50		



ORDERING CODE

CATALOG NO. H<sub>1</sub> Color (R - Y)  
ASEBPGP 32 30 Y

Catalog No.		①/② (End block)		③/④ (Stock block)	
Type	PD	H <sub>1</sub> 5mm increments	Color	H <sub>2</sub> 5mm increments	Color
AEBSBPGP (①ASEBPGP+③ASSBPGP)	25	10 ~ 30	R (Red)	10 ~ 20	R (Red)
		35 ~ 50		25 ~ 40	
	32	10 ~ 30		10 ~ 20	
		35 ~ 50		25 ~ 40	
	38	15 ~ 30		10 ~ 20	
		35 ~ 50		25 ~ 50	
AEBSBBGP (②ASEBBGP+④ASSBBGP)	50	20 ~ 30	Y (Yellow)	10 ~ 20	Y (Yellow)
		35 ~ 50		25 ~ 50	
	60	20 ~ 30		10 ~ 20	
		35 ~ 50		25 ~ 50	
	80	20 ~ 30		10 ~ 20	
		35 ~ 50		25 ~ 50	



ORDERING CODE

CATALOG NO.  
ACEB

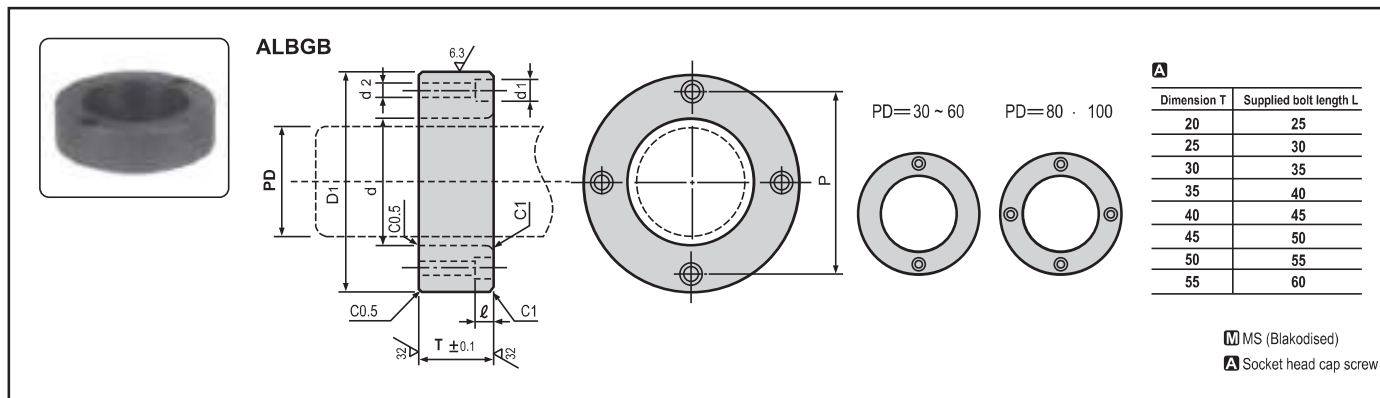
Note : The guide post set requires tap hole machining for mounting.



ORDERING CODE

CATALOG NO.		①·②		③·④	
TYPE	PD	H <sub>1</sub>	R - Y	H <sub>2</sub>	R - Y
AEBSBPGP	50	40	Y	30	R

# Locking Blocks For Guide Bushing



**ALBGB**

Technical drawing showing side and top views of the ALBGB locking block. Dimensions include: PD (Pitch Diameter), D1 (Applicable diameter of posts), d2 (Applicable bushing outside diameter), d (Pitch diameter), P (Pitch),  $\ell$  (Length), d1, d2 (Mounting bolt diameters), T (Thickness), and chamfered edges (C0.5, C1). Surface finish is 6.3. Material is MS (Blakodised).

Dimension T	Supplied bolt length L
20	25
25	30
30	35
35	40
40	45
45	50
50	55
55	60

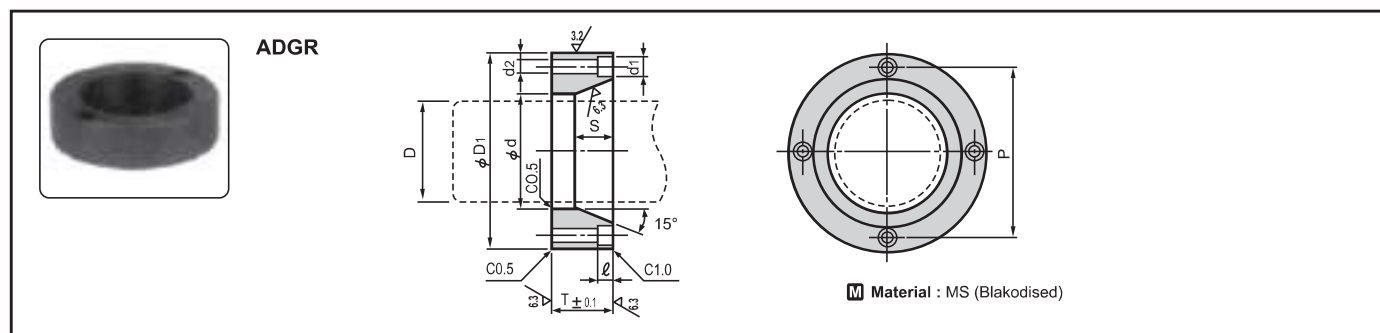
Material: MS (Blakodised)  
 Ⓜ Socket head cap screw

D1	PD Applicable diameter of posts	D2 Applicable bushing outside diameter	d	P	$\ell$ ※1	d1	d2	Ⓜ Mounting bolts	Catalog No.		T 5mm increments	Color
									Type	PD		
96	30	50	35	72	15	17.5	11	M10—L Qty : 2	ALBGB	30	20 ~ 30	R (Red) Y (Yellow) N (Blakodised)
106	40	60	45	82						40	20 ~ 40	
116	50	70	55	92						50	20 ~ 55	
126	60	80	65	102						60		
150	80	100	85	124	20	14	M12—L Qty : 4	ALBGB	80	20 ~ 55	N (Blakodised)	
170	100	120	105	144					100			20 ~ 50

※1 If T = 20,  $\ell$  = 12

☎ **ORDERING CODE**    **CATALOG NO.**    T    Color  
 ALBGB 60    30    Y

# Distance Guide Rings



**ADGR**

Technical drawing showing side and top views of the ADGR distance guide ring. Dimensions include: D (Outer diameter),  $\phi$ D1 (Pitch diameter),  $\phi$ d (Pitch diameter), P (Pitch), S (Distance), d1, d2 (Mounting bolt diameters),  $\ell$  (Length), T (Thickness), and chamfered edges (C0.5, C1.0). Surface finish is 6.3. Material is MS (Blakodised).


Material: MS (Blakodised)

D1	d	P	S		d1	d2	$\ell$	D2	D3	Catalog No.		T 5mm increments	Color
			T=25	T $\geq$ 30						Type	D		
108	54	88	28	28	17.5	11	15	38	50	ADGR	38	25 ~ 55	R (Red) Y (Yellow) N (Blakodised)
118	64	98						50	60		50		
148	84	126						60	80		60		
168	104	146						80	100		80		
188	124	166						100	—		100		
								—	—		100		


☎ **ORDERING CODE**    **CATALOG NO.**    T    Color  
 ADGR 38    20    N



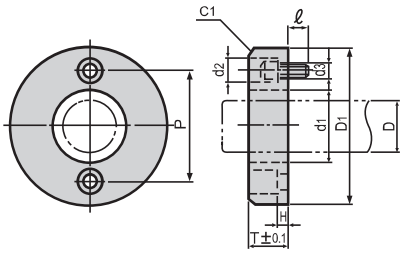
# Stroke End Blocks - For Press Fit Post / Wide Outer Diameter Type



**ASEBPPF**  
(For press fit post)



**ASEBWOD**  
(Wide outer diameter type)



Mat : MS (Blakodised)


D1	P	d1	T	H	d2	d3	Accessories Allen bolts	l	Catalog No.		T	Color
									Type	D		
75	60	43	20 - 25 - 30	10	10	5.5	M5-20	10	ASEBPPF	38	20	R (Red)
			20 - 25	10	6.5	M6-20	50					
			30 - 35 - 40	20	6.5	M6-30	50					
120	92	65	20 - 25	8	14	9	M8-20	12	ASEBPPF	60	30	Y (Yellow)
			30 - 35 - 40	18			M8-30			80		
			20 - 25	8			M8-20			80		
150	116	88	30 - 35 - 40	18	14	9	M8-30	12	ASEBPPF	80	40	N (Blakodised)
			20 - 25	8			M8-20			80		
120	100	54	15	5	14	9	M8-20	15	ASEBWOD	50	15	R (Red)
			20	10				10		60		
140	120	64	15	5	14	9	M8-20	15	ASEBWOD	60	20	N ((Blakodised)
			20	10				10		60		



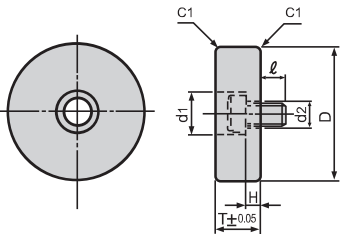
**ORDERING  
CODE**

CATALOG NO.	T	R - Y - N
ASEBPPF 60	20	Y

# Stroke End Blocks - For Draw/wrist/presser Balancer



**ASEBPPB**  
(For Draw/Wrist/Presser balancer)



Mat : EN-8 (Blakodised)  
Allen bolt (M12-30)

d1	d2	H	l	Catalog No.		T	Color			
				Type	D					
20	14	14	16	ASEBPPB	40	20	R (Red)			
						30				
						20				
						30				
						20				
						30				
		14	16		14	16	70	20	Y (Yellow)	
								30		
								40		
								50		
								20		N (Blakodised)
								30		
40										
						50				



**ORDERING  
CODE**

CATALOG NO.	T	R - Y - N
ASEBPPB 60	20	Y